



THE FULLERTON HOTEL
SINGAPORE

PRESS KIT

CONTENTS

The Fullerton Experience & Quick Facts	PG 2
Rooms & Suites	PG 4
Dining Establishments	PG 6
Leisure Facilities	PG 9
The Fullerton Heritage Gallery	PG 10
Awards & Accolades	PG 11
Facilities Guide	PG 14
Photographs & Media Contact Details	PG 15



THE FULLERTON HOTEL

SINGAPORE

THE FULLERTON EXPERIENCE

Built in 1928, the Fullerton Building was the centre of Singapore's commercial, social and official life. It was once home to the nation's General Post Office, The Exchange, Chamber of Commerce and The Singapore Club – all of which played a pivotal role in the history of Singapore. The Fullerton Building began a new chapter in its illustrious history with a S\$400 million restoration into Singapore's landmark hotel, The Fullerton Hotel Singapore in 2001.

Under the ownership of Sino Land and its Singapore affiliate, Far East Organization, all the authentic details of the legendary building were meticulously restored and the rich history of The Fullerton Building was combined with the highest levels of luxury and technology. The Doric columns, coffered ceilings, cornices and Italian marble floors were restored to their original splendour. In July 2001, The Fullerton Hotel Singapore received the Urban Redevelopment Authority Architectural Heritage Award, Singapore's highest honour recognising contributions towards the protection and restoration of Singapore's built heritage.

The hotel today is a perfect blend of the old, wired with the new. The Fullerton Hotel surrounds its guests with a refreshing ambience of peace and tranquillity. The hotel's interior designers, Hirsch Bedner and Associates created a style of décor that is contemporary and stylish. Slick and streamlined fittings grace the bathrooms that are accessorised with the hotel's customized brand of bathroom amenities. State-of-the-art features and complimentary broadband connectivity provide guests with high-speed Internet access. The building's heritage and classic architecture make it eminently suited as a grand hotel. With distinguished Doric columns and monumental porte cocheres, The Fullerton Hotel represents the height of Palladian architecture in Singapore, with only two other buildings in the city that share the same architectural grandeur – the City Hall and Supreme Court.

Designed by the Shanghai-based firm of Keys & Dowdeswell, this venerable historic landmark enjoys a strategic location at the mouth of the bustling Singapore River, making it the focal point of commercial activities in its heyday. Today, Fullerton Square remains as one of the most prestigious addresses in Singapore. Well-positioned in the heart of Singapore's Central Business District, the hotel is within walking distance to the cultural centres of Victoria Theatre and Concert Hall, the Asian Civilisations Museum and the Esplanade – Theatres on the Bay as well as Boat Quay, one of Singapore's most popular dining and entertainment belt.

The Merlion, Singapore's national icon is located just across the road at One Fullerton, a waterfront dining and entertainment complex, linked to the hotel via an underground traveller.

The shopping hub of Suntec City Mall and Marina Square are just minutes from the hotel. The hotel's proximity to the Raffles Place Mass Rapid Transit (MRT) station allows you easy access to several key locations in Singapore.

Named #1 among "Top Ten Hotels in Singapore" in Condé Nast Traveler's Readers' Choice Awards in 2017, Best Business Hotel in Singapore in Business Traveller Asia-Pacific from 2016 to 2017 and Runner-up in "Top Hotels in Singapore" by Travel + Leisure USA's World's Best Awards in 2017, The Fullerton Hotel Singapore is an inspiration to all who pass through her doors.



THE FULLERTON HOTEL

SINGAPORE

QUICK FACTS

- The hotel's site was previously occupied by Fort Fullerton. Named after Sir Robert Fullerton, the first governor of the Straits Settlements, the fort was built in 1829 to defend the town at the mouth of the Singapore River.
- The Fullerton Building, built in four years, was the largest building ever built in Singapore then, costing over 4 million dollars. Completed in 1928, she was lauded by Sir Clifford as a "monument worthy of the city".
- Perched atop the Fullerton Building sits the original landmark Lighthouse, which was used to guide ships approaching the harbour. The lighthouse ceased operations in August 1978.
- Since the 1950s, Fullerton Square on which the hotel now sits, was the site of many election campaign rallies.
- In the early days, the Fullerton Building was occupied by the General Post Office, which used the basement and two floors as sorting rooms, postal halls and offices. It utilised the waterfront along Collyer Quay to transport the mail onto waiting ships.
- The Fullerton Building was designed by the Shanghai-based architectural firm Keys & Dowdeswell and is an example of a neo-classical colonial government building, distinguished by tall Doric columns.
- The Fullerton Building is flanked by two historic bridges – Cavenagh Bridge and Anderson Bridge. Cavenagh Bridge is named after Colonel Orfeur Cavenagh, governor of the Straits Settlements from 1859 to 1867. Anderson Bridge is named after Sir John Anderson, Governor of the Straits Settlements and High Commissioner of the Federated Malay States from 1904 to 1911. Today, the bridge marks the famous hairpin turn in the Singapore GP street race circuit.
- The last occupant of the Fullerton Building was the General Post Office. They vacated the premises on 24 March 1996.
- The Fullerton Hotel (formerly The Fullerton Building) was gazetted as Singapore's 71st National Monument on 7 December 2015.



THE FULLERTON HOTEL

SINGAPORE

ROOMS, SUITES & THE STRAITS CLUB

Luxury resides in every detail at The Fullerton Hotel. From the soft vanilla coloured walls to freshly-pressed sheets, the stylishly chic accommodations offer the traveller a fresh and contemporary décor that exudes a sense of warmth and comfort.

400 rooms and suites either overlook the sunlit atrium courtyard, or have balconies that open out to sweeping panoramas of the city skyline, river promenade or sea.

When it comes to surpassing guest expectations, The Fullerton Hotel delivers with personal touches, such as the discreet way polished shoes are dispatched, through a specially designed niche in the wardrobe closet of each room. To ensure global connectivity for its business guests, all rooms and suites are wired with complimentary broadband high speed Internet connectivity. Meeting rooms at The Fullerton can also be interfaced with a local area network (LAN) for e-mailing and electronic collaboration. This is made possible through a system of fibre-optic cables that run discreetly throughout the hotel. That means that guests having a seminar or meeting at the hotel will be able to enjoy the office-like benefits of staying connected.

Post Master Rooms offer scenic views of the city skyline. (387 square feet)

Courtyard Rooms offer elegant and contemporary accommodation with views of the sunlit atrium lobby, making it a welcome retreat for the business or leisure traveller. (452 square feet)

Premier Courtyard Rooms offer comfort and style in an elegant accommodation with views of the sunlit atrium lobby. (452 square feet)

Quay Rooms are a popular accommodation choice as they offer charming views of the historic Singapore River. (388 – 420 square feet)

Heritage Rooms are The Fullerton Hotel Singapore's unique range of rooms that reflect the distinctive character of this building. With some rooms featuring historic architectural cornices and original motifs from 1928, you can immerse in the history of the building when you stay in our Heritage Rooms. (398 - 764 square feet)

Quay Pool View Rooms offer elegant accommodations with views of the infinity pool set against the backdrop of Singapore's historic Civic District (388 – 420 square feet)

Premier Quay Rooms are delightfully well-appointed with an adjoining balcony overlooking the panoramic Marina Bay. (388 – 420 square feet)

Esplanade Rooms are luxuriously spacious rooms located on the top floor of the hotel, offering panoramic views of the Marina Bay or Singapore River. (775 square feet)

Collyer Suites: Surround yourself in timeless elegance in our one-bedroom Collyer Suites. With an en suite living room, the Suite reflects a blend of Asian and Colonial influences. (1001 square feet)

Palladian Suites: One-bedroom suites offering spectacular views of the riverside and bay. In particular, Palladian Suite 777 embodies special significance, as it was once part of the office of the former Minister of Finance Dr. Hon Sui Sen. (1001 square feet)

Loft Suites: Distinctive two-storey duplex suites with splendid high ceilings. From the living room on the lower floor, a spiral stair leads to the bedroom above, ensuring that the bedroom remains your private domain while business discussions or friendly get-togethers take place in the living room. Eight Loft Suites line the building, each featuring original double storey French doors leading out to a balcony with a view of the Marina Bay waterfront. (1173 square feet)

Fullerton Suites: Located on the highest floor of the hotel complete with a generous living area, study and a spacious outdoor terrace with breathtaking views of the Singapore River and Marina Bay. (970 square feet)



THE FULLERTON HOTEL

SINGAPORE

Governor Suite: The hotel's grand suite. Its beautiful design includes wall motifs that date back to the 1920s. The living room opens out to a magnificent verandah flanked by 20-foot Doric columns on each side, and offers stunning views of Anderson Bridge which marks the hairpin turn of the Singapore Grand Prix street circuit and The Fullerton Waterboat House, another conserved building. The Governor Suite also features a luxuriously furnished bedroom, elegant dining room and kitchen, as well as a Bang and Olufsen sound system and television. (828 square feet)

Presidential Suite: Formerly the card room of the elite Singapore Club, this 199 square metre suite is furnished with a baby grand piano and has a private elevator for discreet access. The living and dining room extends out to a spectacular glass-enclosed verandah graced by 20-foot Doric columns – a befitting space for the Presidential Suite's guests. A private study adjoins the handsomely furnished bedroom. The spacious bathroom is accessorised with Bvlgari bathroom amenities. (2169 square feet)

The Straits Club: Guests residing in any of the hotel's 28 suites enjoy The Straits Club privileges which include round-the-clock personalised service, in-room room registration, complimentary daily Champagne breakfast, daily refreshments, evening canapés and cocktails in the dedicated lounge with a soaring ceiling and vintage Peranakan decor featuring Straits Chinese artefacts. Other privileges include preferred laundry rates and a late checkout, subject to availability. During their stay, guests may also avail of a meeting room for up to eight persons for two hours, and pressing service for up to two clothing items. The Straits Club offers the ultimate service experience by providing premium accommodation with the highest level of quality and comfort for the discerning traveller.



THE FULLERTON HOTEL
SINGAPORE

DINING ESTABLISHMENTS

To cater to global palates, a variety of restaurants and idyllic lounges are available for guests to unwind at.

Town Restaurant

From its cool interior designed along clean lines, with seats finished in leather, Town Restaurant is perfect for a power breakfast, casual business lunch or pre-theatre dinner. Town Restaurant offers refined international flavours in an extensive à la carte menu as well as a variety of buffets. It offers a Power Breakfast, International Buffet Lunch, Asian Buffet Lunch, Asian Buffet Dinner, Seafood Gourmet Buffet Dinner, and a lavish Sunday Champagne Brunch. Enjoy the Singapore High Tea Buffet or after-work drinks by the newly revamped al fresco waterfront terrace, which places you right next to the historic Singapore River.

Cuisine: Local and international buffets with an à la carte selection

Capacity: 297 seats

Operation Hours:

All Day Dining: 6.30 a.m. to 11.00 p.m.

International Buffet Lunch: Monday to Friday: 11.30 a.m. to 2.30 p.m.

Singapore High Tea Buffet: Saturday and Public Holidays: 12.00 p.m. to 3.30 p.m.

Sunday Champagne Brunch: 12.00 p.m. to 3.30 p.m. (last pour at 3.00 p.m.)

Heritage and International Dinner Buffet: Sundays to Wednesdays: 6.30 p.m. to 10.30 p.m.

Seafood and Barbecue Dinner Buffet: Thursdays to Saturdays: 6.30 p.m. to 10.30 p.m.

Reservations: (65) 6877 8911 / 8912 or dining-rsvp@fullertonhotels.com

Jade

For ten years, Jade restaurant has offered diners in Singapore Cantonese-style cuisine of exceptional quality and elegance, and hospitality of unforgettable warmth, amply earning for itself the revered reputation of its precious gemstone namesake. Its refurbished interior, and gourmet menu revitalised by Executive Chinese Chef Leong Chee Yeng, continues this distinguished tradition. The 120-seat establishment, with its two private rooms and two partitioned areas, now bears a new colour palette reflecting the lustre of jade, specially commissioned wallpaper, and evocative overhead lantern lighting among other exciting revamps. Housed within the historic and beautifully conserved The Fullerton Hotel Singapore, itself a national treasure, Jade restaurant represents a fusion of heritage, design, culture, and exquisite dining that is unique to the Singapore culinary scene.

Cuisine: Cantonese

Capacity: 120 seats (includes 2 private rooms and 2 semi-private rooms)

Operation Hours:

Daily: 11.30am to 2.30pm; 6.30pm to 10.30pm

Jade Dim Sum Treasures: 11.30am to 2.30pm (Weekends and Public Holidays only)

Reservations: (65) 6877 8911 / 8912 or dining-rsvp@fullertonhotels.com



THE FULLERTON HOTEL

SINGAPORE

The Lighthouse Restaurant & Rooftop Bar

Sitting at the apex of The Fullerton Hotel where lighthouse keepers used to guide ships in, this Italian restaurant is a beacon on the culinary scene today. The Lighthouse Restaurant features authentic Italian cuisine amidst a lovely ambience, complete with panoramic views of Marina Bay and the city skyline. The establishment extends to an exclusive rooftop bar – a perfect destination for enjoying the sunset or the nightly Marina Bay Light Show with its selection of *stuzzichinis* and Italian-style cocktails. Savouring Italian creations while basking in the breathtaking views make dining at The Lighthouse Restaurant an unforgettable experience.

Cuisine: Italian

Capacity: 50 seats (restaurant), 40 seats (rooftop)

Operation Hours:

Weekdays: Lunch: 12.00pm to 2.30pm

Daily Dinner: 6.30pm to 10.30pm

Reservations: (65) 6877 8911 / 8912 or dining-rsvp@fullertonhotels.com

Post Bar

What was once the transaction hall of the General Post Office has been transformed into a sleek, sophisticated bar that's one of the ideal hotel bars in Singapore for a Fullerton Merlion Cocktail, wines and Martinis. A favourite haunt of the Raffles Place business set and deal-makers, the Post Bar's distinctive décor of underlit honey onyx bar tables and standing artichoke cardboard lamps are seamlessly offset by the room's original classic design elements such as the wall motifs and lofty coffered ceiling. A private Music Room spins contemporary and New World tracks while an adjoining outdoor East Garden provides a lush al fresco setting at The Fullerton Hotel Singapore.

Capacity: 100 seats

Operation Hours:

Monday to Wednesday: 3.00pm to 12.00am

Thursday to Saturday: 3.00pm to 1.00am

Reservations: (65) 6877 8911 / 8912 or dining-rsvp@fullertonhotels.com

The Courtyard

Located in The Fullerton Hotel Singapore's sunlit atrium lobby, The Courtyard is the lively restaurant setting for all-day dining, whether it is a light meal, a signature Japanese or Indian curry buffet, leisurely afternoon tea with unlimited replenishment of your tiered contents and free-flowing coffee and tea; or an elegant cocktail. Tastefully furnished with plush sofas and an idyllic ambience, the experience is complemented by a harpist during afternoon tea on weekend and toe-tapping rhythms of our jazz quartet in the evenings.

Capacity: 130 seats

Operation Hours:

Daily: 8.00am to 11.00pm

North Courtyard:

Japanese Buffet: Mondays to Fridays, 11.30am to 2.30pm

Heritage Coffee: Mondays to Fridays, 3.00pm to 6.00pm; Saturdays and Eve of Public Holidays (excludes Sundays): 12.30pm to 6.00pm

Chocolate Buffet: Fridays and Saturdays: 8.00pm to 11.00pm



THE FULLERTON HOTEL
SINGAPORE

South Courtyard:

Indian Curry Buffet: Mondays to Fridays, 11.30am to 2.30pm

Afternoon Tea: Mondays to Fridays, 3.00pm to 6.00pm,

Saturdays, Sundays and Public Holidays, 2.00pm to 4.00pm and 4.30pm to 6.00pm

Reservations: (65) 6877 8911 / 8912 or dining-rsvp@fullertonhotels.com



THE FULLERTON HOTEL

SINGAPORE

LEISURE

Relaxation is easy amidst the elegant setting of The Fullerton Hotel and the warm attentive hospitality. Enjoy a languid day by the graceful outdoor infinity pool flanked by the historic Singapore River on one side and Doric columns along the other. The juxtaposition of modern skyscraper skyline and classic architecture makes this one of the most picturesque, and timeless pools in the heart of the city.

Guests in need of a workout can opt for a run along the Marina Bay whilst taking in the sights or alternatively, discover our newly enhanced **Fitness Centre** located at the Mezzanine floor of the hotel which features the latest gym equipment.

The Fullerton Spa, a spa destination located on the Mezzanine floor of the hotel, features an enticing selection of therapies focused on delivering visible results. Our therapists, with an innate sense of touch, will create a passage to allow you to escape, renew and relax within the neoclassical tranquillity of The Fullerton Hotel. The Fullerton Spa uses the product line by the award-winning UK based company, Aromatherapy Associates. Its products are created with the purest natural oils and extracts and are paraben free.

At The Fullerton Hotel, the finest things in life are to be found amongst the boutiques offering a selection of luxury jewellery and accessories. For a unique memento, **The Fullerton Shop** located at the hotel's lobby features a range of Fullerton merchandise for the perfect keepsake.



THE FULLERTON HOTEL
SINGAPORE

THE FULLERTON HERITAGE GALLERY

The Fullerton Heritage unveiled a newly transformed Fullerton Heritage Gallery on 5 October 2016, in Singapore's 71st National Monument, The Fullerton Hotel Singapore.

Since the opening of The Fullerton Hotel Singapore on 1 January 2001, Sino Group, the developer of The Fullerton Heritage, has strived to be a guardian of Singapore's heritage through active outreach programmes and complimentary heritage tours. The preservation of architectural elements in four historic properties - The Fullerton Hotel, The Fullerton Waterboat House, Clifford Pier and Customs House - has won the company accolades from URA Architectural Heritage Award and FIABCI Prix d'Excellence Award. Most recently, The Fullerton Hotel was recognised as Singapore's 71st National Monument by the Preservation of Sites and Monuments of the National Heritage Board.

"As the company continues to present Singapore's unfolding story to both international and Singaporean guests, it is with great anticipation that we open a newly transformed Fullerton Heritage Gallery, which showcases the stories of modern Singapore and The Fullerton Heritage precinct in an interactive and immersive way," said Cavaliere Giovanni Viterale, General Manager of The Fullerton Heritage. He added, "I look forward to the Gallery becoming a special place for global and local travellers to come together, to appreciate the gift of legacy passed down from the pioneers of Singapore, in The Fullerton Hotel Singapore that holds great historic and modern significance."

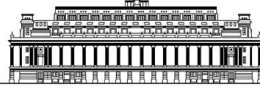
Visitors to The Fullerton Heritage Gallery will enjoy a comprehensive museum experience. The Gallery will feature rare postal archival materials dating back to 1960s as well as videos of pioneer personalities who have lived, worked and played in the precinct. One of the key highlights includes a recreation of the inner workings of the first floor of Fullerton Building that was put together with the help of former postal officers as well as Urban Redevelopment Authority (URA). Through collaborative efforts, The Fullerton Heritage Gallery hopes to capture the rapidly diminishing memories and materials of the past to make them accessible and relevant for the public.

Children will also find themselves immersed in a full suite of fun activities specially tailored for them. From jigsaw puzzle solving to postcard embossing station and a reading corner that is well stocked with illustrated books on Singapore's history, The Fullerton Heritage Gallery provides a platform for the young ones to learn about Singapore's heritage in an engaging manner.

Besides touring the Gallery, guests are also able to take a step back in time on complimentary guided tours: "The Fullerton Monument Tour" available at The Fullerton Hotel Singapore and "A Maritime Journey Tour" available at The Fullerton Bay Hotel Singapore. Available five times weekly on selected timings; visitors can gain exclusive access to preserved areas within the two hotels and the precinct. For more information on the tours or to register, visit The Fullerton Heritage website. www.thefullertonheritage.com.

Entry to The Fullerton Heritage Gallery located at The Fullerton Hotel Singapore is complimentary and the opening hours are from 10.00am. to 10.00pm.

For enquiries, please email enquiries@fullertonhotels.com.



THE FULLERTON HOTEL
SINGAPORE

AWARDS & ACCOLADES

As a unique heritage hotel, The Fullerton Hotel Singapore has received international awards and accolades in recognition of the exemplary experiences that guests have. The awards include:

AmCham CARES Award (2018)

DestinAsian Readers' Choice Awards (2017, 2018) – Top 10 Hotels in Singapore

Singapore Forbes Travel Guide (2013 – 2018) – Four Star Rating

Condé Nast Traveller India Readers' Travel Awards 2017 - "Favourite Hotel in Asia" category - The Fullerton Hotel Singapore 2nd runner

Expat Living Reader's Choice Awards (2018) – Favourite Champagne Brunch Venue (Gold)

Expat Living Reader's Choice Awards (2018) – Favourite Afternoon Tea Venue (Gold)

Travel + Leisure India & South Asia (2013 - 2014, 2016 - 2017) - Best Heritage Hotel (World Category)

Condé Nast Traveler's Readers' Choice Awards (2017) - #1 among "Top Ten Hotels in Singapore"

Corporate Travel Awards 2017 – Best Modern Luxury Hotel of the year

Institutional Investor, World's Best Hotels (2017) – Top 100 Hotels in the World

Condé Nast Traveller's Readers' Travel Awards 2017 – Top 20 Overseas Holiday Hotels in Asia & Indian Subcontinent (2012, 2013, 2017)

Business Traveller Asia-Pacific Awards (2016 & 2017) - Best Business Hotel in Singapore

Travel + Leisure USA's World's Best Awards (2017) – Top Hotels in Singapore (Runner-up)

Smart Travel Asia's Best in Travel (2017) – Best Conference Hotels and Eight Best Business Hotel in Asia

Luxury Travel Guide Awards (2017) – Grand Luxury Hotel of the Year – Singapore

Ctrip Travelers' Top Spots (2016) – 2016 Most Popular Hotel

Ctrip (2016) – Top Hotel 2016

TripAdvisor Travellers' Choice (2017) - Top 1 Percent of Hotels in Singapore

Travel + Leisure India & South Asia (2013, 2014, 2016 and 2017) – Best Heritage Hotel (World Category)

Condé Nast Traveler USA (2016) - Top 20 Hotels in Southern Asia

Condé Nast Traveller UK (2016) - Top 20 Hotels in Asia and the Indian Subcontinent

Hotel Security Awards (2016) - Hotel Security Excellence Award

Singapore Tatler's Best Restaurants (2017) – Singapore's Best Restaurant: The Lighthouse Restaurant & Rooftop Bar

Singapore Tatler's Best Restaurants (2017) – Singapore's Best Restaurant: Town Restaurant

Singapore Tatler's Best Restaurants (2017) – Singapore's Best Restaurant: Jade



THE FULLERTON HOTEL
SINGAPORE

Her World Brides Editor's Choice (2016) – Best Heritage Solemnisation Venue: The Straits Room
Smart Travel Asia's Best in Travel Poll (2016) – Top 25 Business Hotels

Safety and Security Watch Group (2016) – Outstanding Individual Award

G Restaurant Awards (2016) - Award of Excellence: The Lighthouse Restaurant & Rooftop Bar

Wine & Dine Singapore's Top Restaurants (2016) – House of Stars – Two Stars: Jade and The Lighthouse Restaurant & Rooftop Bar

STYLE Magazine (2016) – STYLE Beauty Treat: The Fullerton Spa's Asian Heritage Signature Massage

WGS Awards of Excellence (2016) - Majestic Restaurant Asian Cuisine Chef of the Year: Jade Restaurant Chef Leong Chee Yeng

FinanceAsia, Business Travel Poll (2016) – Top 3 Hotels in Singapore

DestinAsian, Readers' Choice Awards (2016) – Top 5 Hotels in Singapore

Condé Nast Traveler USA, Readers' Choice Awards (2015) – Top 10 Hotels in Singapore

Condé Nast Traveler USA, Gold List (2005 – 2010, 2013 & 2014) – Amongst World's Best Hotels

Condé Nast Traveler USA, Readers' Choice Awards (2004 – 2014) – Amongst Best Hotels in Southeast Asia

DestinAsian Readers' Choice Awards (2014) – Best Hotel in

Condé Nast Traveller UK, Readers' Travel Awards (2012 – 2014) – Top 20 Hotels in Asia & the Indian Subcontinent

Travel + Leisure USA – T+L 500 (2008, 2011, 2013 – 2015) – Amongst Best Hotels in the World

Travel + Leisure USA World's Best Awards (2006, 2007, 2010, 2012 – 2014) – Amongst Top City Hotels in Asia

Singapore Experience Awards (2013) – Best Business Event Service Experience

Singapore Experience Awards (2012) – Customer Service, Nightspot

AsiaOne People's Choice Awards (2013) – Top 3 Hotels in Singapore

Orbitz Best in Stay Hotel (2012) – Singapore

National Arts Council of Singapore – Arts Supporter Award (2005 – 2006, 2010 – 2012), Associate of the Arts Award (2009 & 2013), Friend of the Arts (2014)

SmartTravelAsia.com, Best in Travel Poll (2006 – 2014) – Amongst Top 25 Conference Hotels and Top 25 Business Hotels in Asia

The American Academy of Hospitality Sciences (2010) – Star Diamond Award

Fiabci Prix d'Excellence (Leisure Category) (2003)

Urban Redevelopment Authority of Singapore - Architectural Heritage Award (2001)



THE FULLERTON HOTEL
SINGAPORE

The Fullerton Heritage is recognised with the following awards:

Historic Hotels Awards of Excellence (2016) – Best Historic Hotels Worldwide in Asia Pacific

National Arts Council (2016) – Distinguished Patron of the Arts

National Arts Council (2015) – Patron of the Arts

Fiabci Prix D'excellence Award (2014) – Silver (Heritage Category)

National Arts Council (2014) – Friend of the Arts Award

National Arts Council (2013) – Associate of the Arts Award

Fiabci Singapore Property Awards (2013) – Heritage Category

SME One Asia Awards (2013) – The Hoffen Award (Heritage Category)

National Heritage Board (2012) – Patron of Heritage Award

Urban Redevelopment Authority (2012) – Architectural Heritage Award



THE FULLERTON HOTEL
SINGAPORE

FACILITIES GUIDE

<p><u>Guest Rooms</u></p> <p>400 rooms including 28 suites Ultra-high Definition Internet Protocol TV with local and international channels Complimentary on-demand movies Broadband Internet access Music channels and AM/ FM radio CD player in all suites DVD player in some suites e-Compendium tablet Handy phone with unlimited Internet connectivity everywhere in Singapore, complimentary local calls and IDD calls to 15 selected countries Mini-bar Coffee and tea making facilities Internet connectivity International Direct Dial telephones with data port and voicemail In-room safe with power point for re-charging of devices Bathroom with separate shower Hair dryer Individual temperature control Non-smoking floors Express check-out Shoe shine service Laundry and dry cleaning services</p> <p><u>The Straits Club (4th Floor)</u> Personalised service by a dedicated team Private check-in experience Daily champagne breakfast Exquisite array of refreshments throughout the day Elegant evening cocktails and canapés Exclusive access to the Lounge and Reading Room Complimentary local calls Use of the Internet service at the Lounge Two-hour use of a meeting room (for up to eight persons) per stay Pressing of two clothing items per stay A 10% discount on laundry services Luxurious bathroom amenities DVD players and a selection of DVDs upon request Late checkout, subject to availability</p> <p><u>Financial Centre & Shops (Lobby Level)</u> Workstations offering high-speed Internet access Faxing Scanning Colour copying Colour printing Word processing Translation and interpreter services Courier services Teleconferencing Video conferencing Dataports Mobile phone rental The Fullerton Shop – Souvenir and sundry shop</p>	<p>Passions Watch – New, pre-owned and vintage watches from luxury brands Raffles Jeweller – Fine jewellery shop Rossano Ferretti Hairspa Singapore – Hairstyling services Gallery Nawei – Art gallery Leica – Photography services</p> <p><u>Dining at The Fullerton Hotel</u> Town Restaurant – All-day dining restaurant Jade – Cantonese restaurant The Lighthouse – Italian dining The Courtyard – Lobby lounge with Afternoon Tea and lunch options Post Bar – Drinks and Bar Bites</p> <p><u>Banquets & Meetings</u> Board Room Monday Meeting Room GPO Room Press Room EDB Room Inland Revenue Room TDB Room The Ballroom The Straits Room East Garden Roof Garden</p> <p><u>Recreation</u> 25-metre outdoor infinity pool 24-hour Fitness Centre Jogging route</p> <p><u>The Fullerton Spa (Mezzanine Floor)</u> Spa packages Massage therapies Detox therapies Facial therapies</p> <p><u>Concierge</u> 24-hour service Travel and tour bookings Restaurant reservations Concert and theatre bookings Limousine arrangements Complimentary shuttle services to Singapore's key business buildings and main shopping belts (please enquire with our Concierge for the shuttle schedule)</p> <p><u>Transportation</u> Vintage Rolls Royce Mercedes 'S' Class Mercedes 'E' Class</p>
--	---



THE FULLERTON HOTEL

SINGAPORE

ABOUT THE FULLERTON HOTEL SINGAPORE

2018 marks the 90th anniversary of the Fullerton Building, home to The Fullerton Hotel Singapore. Gazetted as Singapore's 71st National Monument, the hotel once housed the General Post Office, The Singapore Club and the Chamber of Commerce. It is a luxury hotel with 400 rooms and suites carefully designed to provide both business and leisure travellers with a sanctuary of serenity and comfort in which to retreat and rejuvenate. Dynamically located in the heart of the financial and arts districts, the hotel successfully blends rich heritage with contemporary style and personalised service to offer guests a world-class accommodation experience. Epicureans can enjoy a delectable array of dining selections. There are a total of 5 restaurants and bar in the hotel, namely Town Restaurant which presents international buffets and an a la carte menu, Jade features Cantonese cuisine, The Courtyard offers an Indian buffet, Japanese buffet and Afternoon Tea, and The Lighthouse Restaurant & Rooftop Bar with breathtaking views of Marina Bay serves authentic Italian cuisine. Post Bar, which features the original ceiling and pillars of the General Post Office, is the popular choice amongst the trendy elite.

Aside from the dining selections, The Fullerton Hotel also features an exquisite and intimate retail wing. Guests seeking rejuvenation can pamper themselves with the indulgent treatments at The Fullerton Spa.

www.fullertonhotels.com

ABOUT THE FULLERTON HERITAGE

The Fullerton Heritage is an exquisite master planned dining and hospitality complex consisting of The Fullerton Hotel Singapore, The Fullerton Bay Hotel Singapore, The Fullerton Waterboat House, One Fullerton, The Fullerton Pavilion, Clifford Pier and Customs House. This waterfront development's architecture combines the historical with the contemporary, adding vibrancy to the area's rich cultural heritage. It also features one of the longest waterfronts in Singapore, offering unrivalled views of the Marina Bay.

One Fullerton features an exciting tenant mix with some of Singapore's best restaurants, bars and entertainment concepts, including chic cafes to fine-dining alfresco destinations serving Chinese, Italian and other International cuisines. Globetrot and sample the various selections of Shoukouwa, Forlino, Jing, Pelican, OverEasy, Saint Pierre, Palm Beach Seafood, PS. Café and Yamazaki Japanese Restaurant Bar.

For intimate fine dining and wining, The Fullerton Waterboat House has Boathouse while the Clifford Pier; a 1933 historic landmark that was once Singapore's first port of call for immigrants, anchors The Fullerton Bay Hotel's latest flagship restaurant. Customs House, a stunning celebration of Singapore's past, has been transformed into a dining and entertainment complex featuring Kinki, Super Loco, Sabai Fine Thai on the Bay and Asian brasserie & bar Longtail.

PHOTOGRAPHS

Visit <http://preferredhotelgroupimages.com/> to download high-resolution images of The Fullerton Hotel Singapore.

For media enquiries, please contact:

Michelle Wan

Director of Corporate Communications

The Fullerton Heritage

Tel: (65) 6877 8190

Fax: (65) 6877 8010

Email: michelle.wan@fullertonhotels.com